

KWP2000 Flasher



Product Specification:

KWP2000 Interface for ECU flash reading/writing over OBD2 diagnostic socket for a wide range of ECU units.

- Connects to USB
- Supports high speed ECU flashing
- Integrated OBD2 connector
- Led Indications for Power / RX / TX

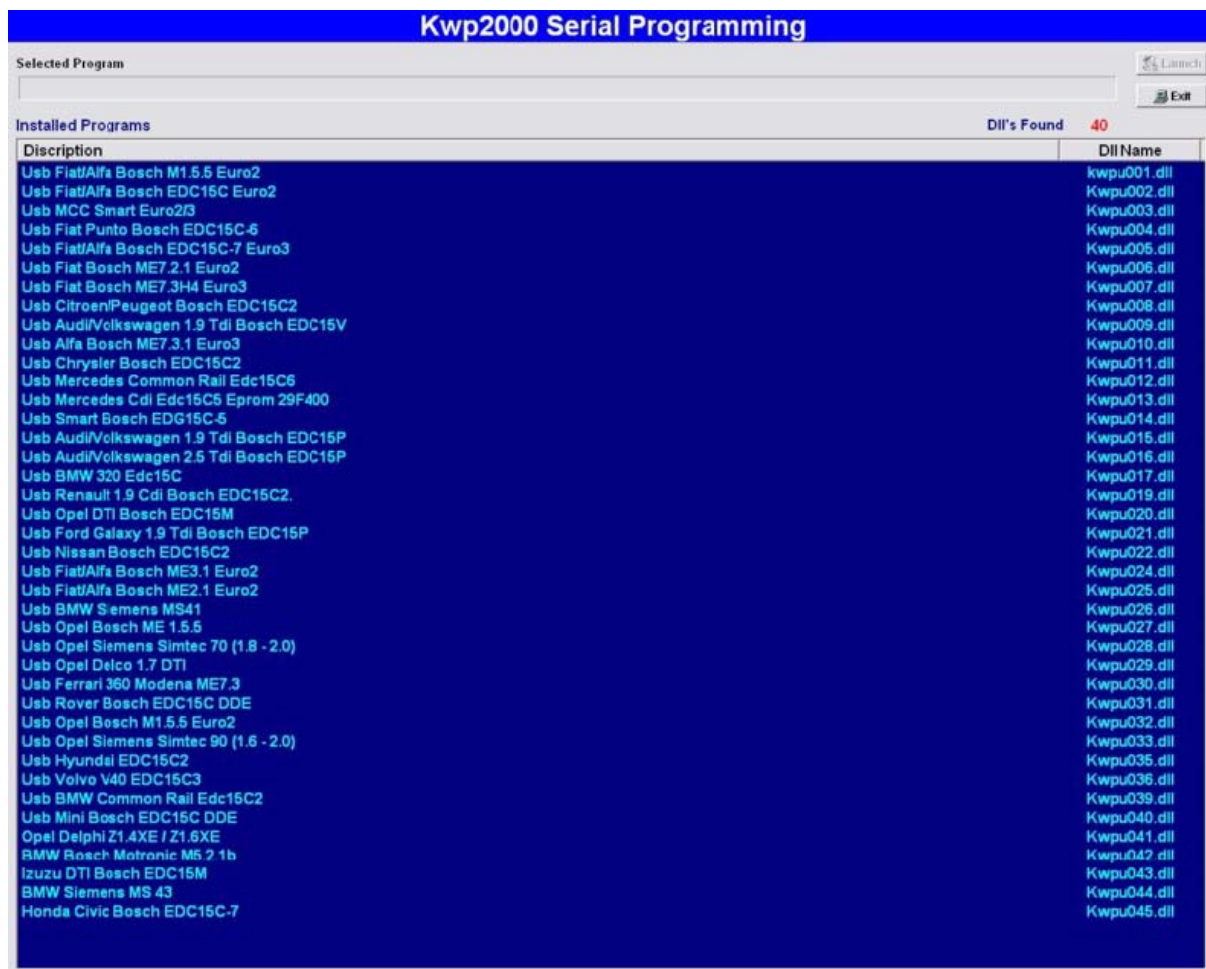
Restrictions:

- Backup of the ECU memory is not supported for some of the listed ECU`s here
- Some ECU`s can not be flashed over the OBD2 connector in the car, in this case you have to remove the ECU from the car and flash it "on desk"

Package includes:

- KWP2000 Flashing Interface with integrated OBD2 connector
- Shielded USB A to USB B connection cable
- OBD2 female to female banana jack cable (For extension of ECU's "on desk")
- 12V Lighter connector to male 4mm banana connectors for powering "on desk" flashing

Software Screenshots:



Supported Car`s and their ECU`s:

[Kwpu001]

Fiat/Alfa:

- 1=Alfa Romeo 145 1.4 Bosch M1.5.5
- 2=Alfa Romeo 145 1.6 Bosch M1.5.5
- 3=Alfa Romeo 146 1.4 Bosch M1.5.5
- 4=Alfa Romeo 146 1.6 Bosch M1.5.5
- 5=Alfa Romeo 146 1.8 Bosch M1.5.5
- 6=Alfa Romeo 146 2.0 Bosch M1.5.5
- 7=Alfa Romeo 156 1.6 Bosch M1.5.5
- 8=Alfa Romeo 156 1.8 Bosch M1.5.5
- 9=Alfa Romeo 156 2.0 Bosch M1.5.5
- 10=Alfa Romeo 166 2.0 Bosch M1.5.5

- 11=Alfa Romeo 166 2.0 Bosch M1.5.5
- 12=Alfa Romeo GTV 1.8 TS 16V Bosch M1.5.5
- 13=Alfa Romeo GTV 2.0 TS 16V Bosch M1.5.5
- 14=Alfa Romeo GTV 3.0 TS 16V Bosch M1.5.5
- 15=Alfa Romeo Spider 1.8 TS Bosch M1.5.5
- 16=Alfa Romeo Spider 2.0 TS 16V Bosch M1.5.5
- 17=Alfa Romeo Spider 3.0 TS 16V Bosch M1.5.5
- 18=Fiat Bravo/Brava 1.2 Bosch M1.5.5

[Kwpu002]

Fiat/Alfa/Lancia:

- 1=Alfa Romeo 145 1.9 JTD Bosch EDC15C5
- 2=Alfa Romeo 146 1.9 JTD Bosch EDC15C5
- 3=Alfa Romeo 156 1.9 JTD Bosch EDC15C5
- 4=Alfa Romeo 156 2.4 JTD Bosch EDC15C5
- 5=Alfa Romeo 166 2.4 JTD Bosch EDC15C5
- 6=Fiat Bravo/Brava 1.9 JTD Bosch EDC15C5
- 7=Fiat Multipla 1.9 JTD Bosch EDC15C5
- 8=Fiat Marea 1.9 JTD Bosch EDC15C5
- 9=Fiat Marea 2.4 JTD Bosch EDC15C5
- 10=Lancia K 2.4 JTD Bosch EDC15C5
- 11=Lancia Lybra 1.9 JTD Bosch EDC15C5
- 12=Lancia Lybra 2.4 JTD Bosch EDC15C5
- 13=Lancia Z 2.0 JTD Bosch EDC15C5

[Kwpu003]

Smart

- 1=MCC Smart Smart 0.7 Bosch MEG1.1

[Kwpu004]

Fiat:

- 1=Fiat Punto 1.9 JTD Bosch EDC15C6
- 2=Fiat Punto 1.9 JTD Bosch EDC15C7

[Kwpu005]

Fiat/Alfa/Lancia:

- 1=Alfa Romeo 147 1.9 JTD 16V Bosch EDC15C7
- 2=Alfa Romeo 147 1.9 JTD 8V Bosch EDC15C7
- 3=Alfa Romeo 156 1.9 JTD Bosch EDC15C7
- 4=Alfa Romeo 156 2.4 JTD Bosch EDC15C7
- 5=Alfa Romeo 166 2.4 JTD Bosch EDC15C7
- 6=Fiat Bravo/Brava 1.9 JTD Bosch EDC15C7
- 7=Fiat Doblo 1.9 JTD Bosch EDC15C7
- 8=Fiat Ducato 2.0 JTD Bosch EDC15C7
- 9=Fiat Ducato 2.3 JTD Bosch EDC15C7
- 10=Fiat Ducato 2.8 JTD Bosch EDC15C7
- 11=Fiat Marea 1.9 JTD Bosch EDC15C7
- 12=Fiat Marea 2.4 JTD Bosch EDC15C7
- 13=Fiat Multipla 1.9 JTD Bosch EDC15C7
- 14=Fiat Scudo 2.0 JTD Bosch EDC15C7
- 15=Fiat Stilo 1.9 JTD Bosch EDC15C7
- 16=Lancia Lybra 1.9 JTD Bosch EDC15C7
- 17=Lancia Lybra 2.4 JTD Bosch EDC15C7

18=Lancia Thesis 2.4 JTD Bosch EDC15C7

[Kwpu006]

Fiat/Lancia:

1=Fiat Punto 1.2 Bosch ME7.2.1 Euro2

2=Lancia Y 1.2 Bosch ME7.2.1 Euro2

[Kwpu007]

Fiat/Lancia:

1=Fiat Punto 1.2 Bosch ME7.H3

2=Fiat Stilo 2.4 Bosch ME7.3.1

3=Lancia Y 1.2 Bosch ME7.H3

[Kwpu008]

Citroen/Pergeot/Fiat/Lancia

1=Citroen Berlingo 2.0 HDI Bosch EDC15C2

2=Citroen C5 2.0 HDI Bosch EDC15C2

3=Citroen C5 2.2 HDI Bosch EDC15C2

4=Citroen C8 2.0 HDI Bosch EDC15C2

5=Citroen Evasion 2.0 HDI Bosch EDC15C2

6=Citroen Jumper 2.0 HDI Bosch EDC15C2

7=Citroen Jumper 2.2 HDI Bosch EDC15C2

8=Citroen Jumper 2.8 HDI Bosch EDC15C7

9=Citroen Jumpy 2.0 HDI Bosch EDC15C2

10=Citroen Picasso 2.0 HDI Bosch EDC15C2

11=Citroen Synergie 2.0 HDI Bosch EDC15C2

12=Citroen Xantia 2.0 HDI Bosch EDC15C2

13=Citroen Xsara 2.0 HDI Bosch EDC15C2

14=Citroen Xsara Picasso 2.0 HDI Bosch EDC15C2

15=Fiat Ulysse 2.0 JTD 16V Bosch EDC15C2

16=Fiat Ulysse 2.2 JTD 16V Bosch EDC15C2

17=Lancia Phedra 2.0 JTD Bosch EDC15C2

18=Lancia Phedra 2.2 JTD Bosch EDC15C2

19=Peugeot 206 2.0 HDI Bosch EDC15C2

20=Peugeot 306 2.0 HDI Bosch EDC15C2

21=Peugeot 307 2.0 HDI 110PS Bosch EDC15C2

22=Peugeot 406 2.0 HDI Bosch EDC15C2

23=Peugeot 406 2.2 HDI Bosch EDC15C2

24=Peugeot 607 2.0 HDI Bosch EDC15C2

25=Peugeot 607 2.2 HDI Bosch EDC15C2

26=Peugeot 807 2.0 HDI Bosch EDC15C2

27=Peugeot 807 2.2 HDI Bosch EDC15C2

28=Peugeot Boxer 2.0 HDI Bosch EDC15C2

29=Peugeot Expert 2.0 HDI Bosch EDC15C2

30=Peugeot Partner 2.0 HDI Bosch EDC15C2

[kwpu009]

VAG

1=Audi A3 1.9 TDi VP37 Bosch EDC15V

2=Audi A3 1.9 TDi VP37 Bosch EDC15VM

3=Audi A3 1.9 TDi VP37 Bosch EDC15VM-1M

4=Audi A4 1.9 TDi VP37 Bosch EDC15V

5=Audi A4 1.9 TDi VP37 Bosch EDC15VM

6=Audi A4 1.9 TDi VP37 Bosch EDC15VM-1M
7=Audi A6 1.9 TDi PD Bosch EDC15P
8=Audi A6 1.9 TDi VP37 Bosch EDC15V
9=Audi A6 1.9 TDi VP37 Bosch EDC15VM
10=Audi A6 1.9 TDi VP37 Bosch EDC15VM-1M
11=Seat Alhambra 1.9 TDI VP37 Bosch EDC15V
12=Seat Alhambra 1.9 TDI VP37 Bosch EDC15VM
13=Seat Alhambra 1.9 TDI VP37 Bosch EDC15VM-1M
14=Seat Cordoba 1.9 TDI VP37 Bosch EDC15V
15=Seat Cordoba 1.9 TDI VP37 Bosch EDC15VM
16=Seat Cordoba 1.9 TDI VP37 Bosch EDC15VM-1M
17=Seat Ibiza 1.9 TDI VP37 Bosch EDC15V
18=Seat Ibiza 1.9 TDI VP37 Bosch EDC15VM
19=Seat Ibiza 1.9 TDI VP37 Bosch EDC15VM-1M
20=Seat Leon 1.9 TDI VP37 Bosch EDC15V
21=Seat Leon 1.9 TDI VP37 Bosch EDC15VM
22=Seat Leon 1.9 TDI VP37 Bosch EDC15VM-1M
23=Seat Toledo 1.9 TDI VP37 Bosch EDC15V
24=Seat Toledo 1.9 TDI VP37 Bosch EDC15VM
25=Seat Toledo 1.9 TDI VP37 Bosch EDC15VM-1M
26=Skoda Fabia 1.9 TDI VP37 Bosch EDC15V
27=Skoda Fabia 1.9 TDI VP37 Bosch EDC15VM
28=Skoda Fabia 1.9 TDI VP37 Bosch EDC15VM-1M
29=Skoda Octavia 1.9 TDI VP37 Bosch EDC15V
30=Skoda Octavia 1.9 TDI VP37 Bosch EDC15VM
31=Skoda Octavia 1.9 TDI VP37 Bosch EDC15VM-1M
32=VW Bora 1.9 TDI VP37 Bosch EDC15V
33=VW Bora 1.9 TDI VP37 Bosch EDC15VM
34=VW Bora 1.9 TDI VP37 Bosch EDC15VM-1M
35=VW Golf 4 1.9 TDI VP37 Bosch EDC15V
36=VW Golf 4 1.9 TDI VP37 Bosch EDC15VM
37=VW Golf 4 1.9 TDI VP37 Bosch EDC15VM-1M
38=VW New Beetle 1.9 TDI VP37 Bosch EDC15V
39=VW New Beetle 1.9 TDI VP37 Bosch EDC15VM
40=VW New Beetle 1.9 TDI VP37 Bosch EDC15VM-1M
41=VW Passat 1.9 TDI VP37 Bosch EDC15V
42=VW Passat 1.9 TDI VP37 Bosch EDC15VM
43=VW Passat 1.9 TDI VP37 Bosch EDC15VM-1M
44=VW Sharan 1.9 TDI VP37 Bosch EDC15V
45=VW Sharan 1.9 TDI VP37 Bosch EDC15VM
46=VW Sharan 1.9 TDI VP37 Bosch EDC15VM-1M

[Kwpu010]

Alfa/Lancia

1=Alfa Romeo 147 1.6 Bosch ME7.3.1
2=Alfa Romeo 147 2.0 TS Bosch ME7.3.1
3=Alfa Romeo 156 1.6 Bosch ME7.3.1
4=Alfa Romeo 156 1.8 Bosch ME7.3.1
5=Alfa Romeo 156 2.0 Bosch ME7.3.1
6=Alfa Romeo 166 2.0 Bosch ME7.3.1
7=Alfa Romeo 166 2.5 Bosch ME7.3.1
8=Alfa Romeo 166 3.0 Bosch ME7.3.1
9=Alfa Romeo GTV 2.0 TS 16V Bosch ME7.3.1

- 10=Alfa Romeo GTV 3.0 TS 16V Bosch ME7.3.1
- 11=Alfa Romeo Spider 2.0 TS 16V Bosch ME7.3.1
- 12=Alfa Romeo Spider 3.0 TS 16V Bosch ME7.3.1
- 13=Lancia Lybra 2.0 Bosch ME7.3.1
- 14=Lancia Thesis 2.0 Turbo Bosch ME7.3.1

[Kwpu011]

Chrysler

- 1=Chrysler Grand Cherokee 2.7 CRD Bosch EDC15C2
- 2=Chrysler Jeep Cherokee 2.5 CRD Bosch EDC15C2
- 3=Chrysler Jeep Cherokee 2.8 CRD Bosch EDC15C2
- 4=Chrysler PT Cruiser 2.2 CRD Bosch EDC15C2
- 5=Chrysler Voyager 2.5 CRD Bosch EDC15C2

[Kwpu012]

Mercedes

- 1=Mercedes A-Klasse 1.7 CDI Bosch EDC15C6
- 2=Mercedes C-Klasse (W201) 2.2 CDI Bosch EDC15C6
- 3=Mercedes C-Klasse (W201) 2.7 CDI Bosch EDC15C6
- 4=Mercedes C-Klasse (W203) 2.0 CDI Bosch EDC15C6
- 5=Mercedes C-Klasse (W203) 2.2 CDI Bosch EDC15C5
- 6=Mercedes C-Klasse (W203) 2.2 CDI Bosch EDC15C6
- 7=Mercedes C-Klasse (W203) 2.7 CDI Bosch EDC15C6
- 8=Mercedes C-Klasse (W203) 3.2 CDI Bosch EDC15C6
- 9=Mercedes E-Klasse (W210) 2.0 CDI Bosch EDC15C6
- 10=Mercedes E-Klasse (W210) 2.2 CDI Bosch EDC15C6
- 11=Mercedes E-Klasse (W210) 2.7 CDI Bosch EDC15C6
- 12=Mercedes E-Klasse (W210) 3.2 CDI Bosch EDC15C6
- 13=Mercedes G-Klasse 2.7 CDI Bosch EDC15C6
- 14=Mercedes G-Klasse 4.0 CDI Bosch EDC15C6
- 15=Mercedes M-Klasse 2.7 CDI Bosch EDC15C6
- 16=Mercedes ML-Klasse 2.7 CDI Bosch EDC15C6
- 17=Mercedes ML-Klasse 4.0 CDI Bosch EDC15C6
- 18=Mercedes S-Klasse (W280) 3.2 CDI Bosch EDC15C6
- 19=Mercedes S-Klasse (W280) 4.0 CDI Bosch EDC15C6
- 20=Mercedes V-Klasse 2.0 CDI Bosch EDC15C6
- 21=Mercedes V-Klasse 2.2 CDI Bosch EDC15C6
- 22=Mercedes Vito 2.2 CDI Bosch EDC15C6

[Kwpu013]

Mercedes

- 1=Mercedes A-Klasse 1.7 CDI Bosch EDC15C5
- 2=Mercedes C-Klasse (W201) 2.2 CDI Bosch EDC15C5
- 3=Mercedes M-Klasse 3.2 CDI Bosch EDC15C
- 4=Mercedes Sprinter 2.2 CDI Bosch EDC15C
- 5=Mercedes V-Klasse 2.2 CDI Bosch EDC15C5
- 6=Mercedes Vito 2.2 CDI Bosch EDC15C5

[Kwpu014]

Smart

- 1=MCC Smart CDI 0.9 CDI EDG15C5

[Kwpu015]

VAG

- 1=Audi A2 1.4 TDi PD Bosch EDC15P
- 2=Audi A3 1.9 TDi PD Bosch EDC15P
- 3=Audi A4 1.9 TDi PD Bosch EDC15P
- 4=Seat Alhambra 1.9 TDI PD Bosch EDC15P
- 5=Seat Cordoba 1.9 TDI PD Bosch EDC15P
- 6=Seat Ibiza 1.9 TDI PD Bosch EDC15P
- 7=Seat Leon 1.9 TDI PD Bosch EDC15P
- 8=Seat Toledo 1.9 TDI PD Bosch EDC15P
- 9=Skoda Fabia 1.9 TDI PD Bosch EDC15P
- 10=Skoda Octavia 1.9 TDI PD Bosch EDC15P
- 11=VW Bora 1.9 TDI PD Bosch EDC15P
- 12=VW Golf 4 1.9 TDI PD Bosch EDC15P
- 13=VW Lupo 1.2 TDI PD Bosch EDC15P
- 14=VW Lupo 1.4 TDI PD Bosch EDC15P
- 15=VW New Beetle 1.9 TDI PD Bosch EDC15P
- 16=VW Passat 1.9 TDI PD Bosch EDC15P
- 17=VW Polo 1.4 TDI PD Bosch EDC15P
- 18=VW Polo 1.9 TDI PD Bosch EDC15P
- 19=VW Sharan 1.9 TDI PD Bosch EDC15P

[Kwpu016]

VAG

- 1=Audi A4 2.5 TDi VP44 Bosch EDC15P
- 2=Audi A6 2.5 TDi VP44 Bosch EDC15P
- 3=Audi A8 2.5 TDi VP44 Bosch EDC15P
- 4=Audi Allroad Quattro 2.5 TDi V6 Bosch EDC15P
- 5=VW Passat 2.5 TDI VP37 Bosch EDC15P
- 6=VW T4 Bus 2.5 TDI VP44 Bosch EDC15P

[Kwpu017]

BMW

- 1=BMW Serie 3 (E46) 2.0 D (318d) Bosch DDE3.0
- 2=BMW Serie 5 (E39) 2.0 D Bosch EDC15

[Kwpu019]

Opel/Renault

- 1=Opel Vivaro 1.9 16V DI Bosch EDC15C2
- 2=Renault Espace 1.9 dCi Bosch EDC15C2
- 3=Renault Espace 2.2 dCi Bosch EDC15C2
- 4=Renault Kangoo 1.9 dCi Bosch EDC15C2
- 5=Renault Laguna 1.9 dCi Bosch EDC15C2
- 6=Renault Megane 1.9 dCi Bosch EDC15C2
- 7=Renault Scenic 1.9 dCi Bosch EDC15C2
- 8=Renault Scenic 1.9 dTi Bosch EDC15C2
- 9=Renault Trafic 1.9 dCi Bosch EDC15C2

[Kwpu020]

Opel

- 1=Opel Astra F (4) 1.7 16V DTI Bosch EDC15M
- 2=Opel Astra F (4) 2.0 16V DI Bosch EDC15M
- 3=Opel Astra F (4) 2.2 16V DI Bosch EDC15M

4=Opel Astra G 1.7 16V DI Bosch EDC15M
5=Opel Astra G 2.0 16V DI Bosch EDC15M
6=Opel Frontera 2.2 DTI Bosch EDC15M
7=Opel Vectra B 1.7 16V DI Bosch EDC15M
8=Opel Vectra B 2.0 16V DI Bosch EDC15M
9=Opel Vectra C 2.0 16V DI Bosch EDC15M
10=Opel Vectra C 2.0 16V DTI Bosch EDC15M
11=Opel Zafira 2.0 16V DI Bosch EDC15M

[Kwpu021]

Ford

1=Ford Galaxy 1.9 TDi PD Bosch EDC15P

[Kwpu022]

Nissan

1=Nissan Almera Tino 2.0 Bosch EDC15C2

2=Nissan X-Trail 2.2 Bosch EDC15C2

[Kwpu023]

[Kwpu024]

Fiat/Alfa/Lancia

1=Alfa Romeo 156 2.0 Bosch ME3.1

2=Alfa Romeo 166 2.5 V6 24V Bosch ME3.1

3=Alfa Romeo GTV 3.0 V6 24V Bosch ME3.1

4=Alfa Romeo Spider 3.0 V6 24V Bosch ME3.1

5=Fiat Bravo/Brava 2.0 Bosch ME7.3.1

6=Fiat Bravo/Brava 2.0 20V Bosch ME3.1

7=Fiat Coupe 2.0 20V Bosch ME3.1

8=Fiat Marea 2.4 MDI 20V Bosch ME3.1

9=Lancia Lybra 2.0 i 20V Bosch ME3.1

[Kwpu025]

Alfa Romeo

1=Alfa Romeo 156 2.5 Bosch ME2.1

2=Alfa Romeo 166 2.0 V6 Turbo Bosch ME2.1

3=Alfa Romeo 166 2.5 V6 24V Bosch ME2.1

4=Alfa Romeo 166 3.0 V6 24V Bosch ME2.1

[Kwpu026]

BMW

1=BMW Serie 3 (E36) 2.0 i Siemens MS41

2=BMW Serie 3 (E36) 2.5 i Siemens MS41

3=BMW Serie 3 (E36) 2.8 i Siemens MS41

4=BMW Serie 5 (E39) 2.0 i Siemens MS41

5=BMW Serie 5 (E39) 2.5 i Siemens MS41

6=BMW Serie 7 (E38) 2.8 i Siemens MS41

7=BMW Z3 Roadster 2.0 Siemens MS41

8=BMW Z3 Roadster 2.8 Siemens MS41

[Kwpu027]

Opel

1=Opel Coupe Turbo --- ME1.5.5

[Kwpu028]

Opel

- 1=Opel Astra F (4) 1.8 16V Siemens Simtec70
- 2=Opel Astra F (4) 2.0 16V Siemens Simtec70
- 3=Opel Astra G 1.8 16V Siemens Simtec70
- 4=Opel Astra G 2.0 16V Siemens Simtec70
- 5=Opel Omega B 2.0 16V Siemens Simtec70
- 6=Opel Vectra B 1.8 16V Siemens Simtec70
- 7=Opel Vectra B 2.0 16V Siemens Simtec70
- 8=Opel Vectra C 1.8 16V Siemens Simtec70
- 9=Opel Vectra C 2.0 16V Siemens Simtec70
- 10=Opel Zafira 1.8 16V Siemens Simtec70
- 11=Opel Zafira 2.0 16V Siemens Simtec70

[Kwpu029]

Opel

- 1=Opel Astra F (4) 1.7 16V DTI Delco Y17DT
- 2=Opel Corsa B 1.7 16V Delco Y17DT
- 3=Opel Zafira 1.7 16V Delco Y17DT

[Kwpu030]

Ferrari

- 1=Ferrari Modena 3.6 Bosch ME7.3H4

[Kwpu031]

Rover

- 1=Rover 75 2.0 CDT Bosch DDE4.0
- 2=Rover 75 Tourer 2.0 CDT Bosch DDE4.0

[Kwpu032]

Opel

- 1=Opel Astra G 1.2 16V Bosch M1.5.5
- 2=Opel Corsa B 1.0 12V Bosch M1.5.5
- 3=Opel Corsa B 1.2 16V Bosch M1.5.5
- 4=Opel Corsa C 1.0 12V Bosch M1.5.5
- 5=Opel Corsa C 1.2 16V Bosch M1.5.5

[Kwpu033]

Opel

- 1=Opel Astra F (4) 1.8 16V Siemens Simtec90
- 2=Opel Astra F (4) 2.0 16V Siemens Simtec90
- 3=Opel Astra G 1.8 16V Siemens Simtec90
- 4=Opel Astra G 2.0 16V Siemens Simtec90
- 5=Opel Omega B 2.0 16V Siemens Simtec90
- 6=Opel Vectra B 1.8 16V Siemens Simtec90
- 7=Opel Vectra B 2.0 16V Siemens Simtec90
- 8=Opel Vectra C 1.8 16V Siemens Simtec90
- 9=Opel Vectra C 2.0 16V Siemens Simtec90
- 10=Opel Zafira 1.8 16V Siemens Simtec90
- 11=Opel Zafira 2.0 16V Siemens Simtec90

[Kwpu035]

Hyundai/Kia

- 1=Hyundai Accent 1.5 CRDI Bosch EDC15C2
- 2=Hyundai Elantra 2.0 CRDI Bosch EDC15C2
- 3=Hyundai Matrix 1.5 CRDI Bosch EDC15C2
- 4=Hyundai Santa Fe 2.0 CRDI Bosch EDC15C2
- 5=Hyundai Trajet 2.0 CRDI Bosch EDC15C2
- 6=Kia Carens 2.0 CRDi 16V Bosch EDC15C2
- 7=Kia Sorento 2.5 CRDi Bosch EDC15C2

[Kwpu036]

Volvo

- 1=Volvo V40 2.0 TDI Bosch EDC15C3

[Kwpu039]

BMW/Rover

- 1=BMW Serie 3 (E46) 3.0 D Bosch DDE4.0
- 2=BMW Serie 5 (E39) 2.5 D Bosch DDE4.0
- 3=BMW Serie 5 (E39) 3.0 D Bosch DDE4.0
- 4=BMW Serie 7 (E38) 3.0 D Bosch DDE4.0
- 5=BMW Serie X5 (E53) 3.0 D Bosch DDE4.0
- 6=Land Rover Freelander 2.0 CDT Bosch DDE4.0

[Kwpu040]

Mini

- 1=Mini Cooper 2.0 D Bosch ECD15C2 DDE

[Kwpu041]

Opel

- 1=Opel Astra F (4) 16V Delco
- 2=Opel Astra F (4) 16V Delco
- 3=Opel Vectra B 1.4 16 V Delco
- 4=Opel Vectra B 1.4 16 V Delco

[Kwpu042]

BMW

- 1=BMW Serie 3 (E36) 1.8 i Bosch ME 5.2.1b
- 2=BMW Z3 Roadster 1.9 Bosch ME 5.2.1b

[Kwpu043]

Izuzu

- 1=Izuzu 2.0 16V DI Bosch EDC 15M

[Kwpu044]

BMW

- 1=BMW Serie 3 (E36) 2.0i Siemens Ms43
- 2=BMW Serie 3 (E36) 2.5i Siemens Ms43
- 3=BMW Serie 3 (E36) 2.3i Siemens Ms43
- 4=BMW Serie 3 (E36) 2.8i Siemens Ms43
- 5=BMW Serie 3 (E36) 3.0i Siemens Ms43
- 6=BMW Serie 3 (E36) 3.2i Siemens Ms43
- 7=BMW Serie 5 (E46) 2.0i Siemens Ms43
- 8=BMW Serie 5 (E46) 2.5i Siemens Ms43

9=BMW Serie 5 (E46) 2.3i Siemens Ms43
10=BMW Serie 5 (E46) 2.8i Siemens Ms43
11=BMW Serie 5 (E46) 3.0i Siemens Ms43
12=BMW Serie 5 (E46) 3.2i Siemens Ms43