

# Licznik USB



Licznik USB v4.8a ID: 0000000000000000

EXIT [Icons] PortCom Com1 17:14:27

Dash Radio Mask A-G Mask H-Z Update About

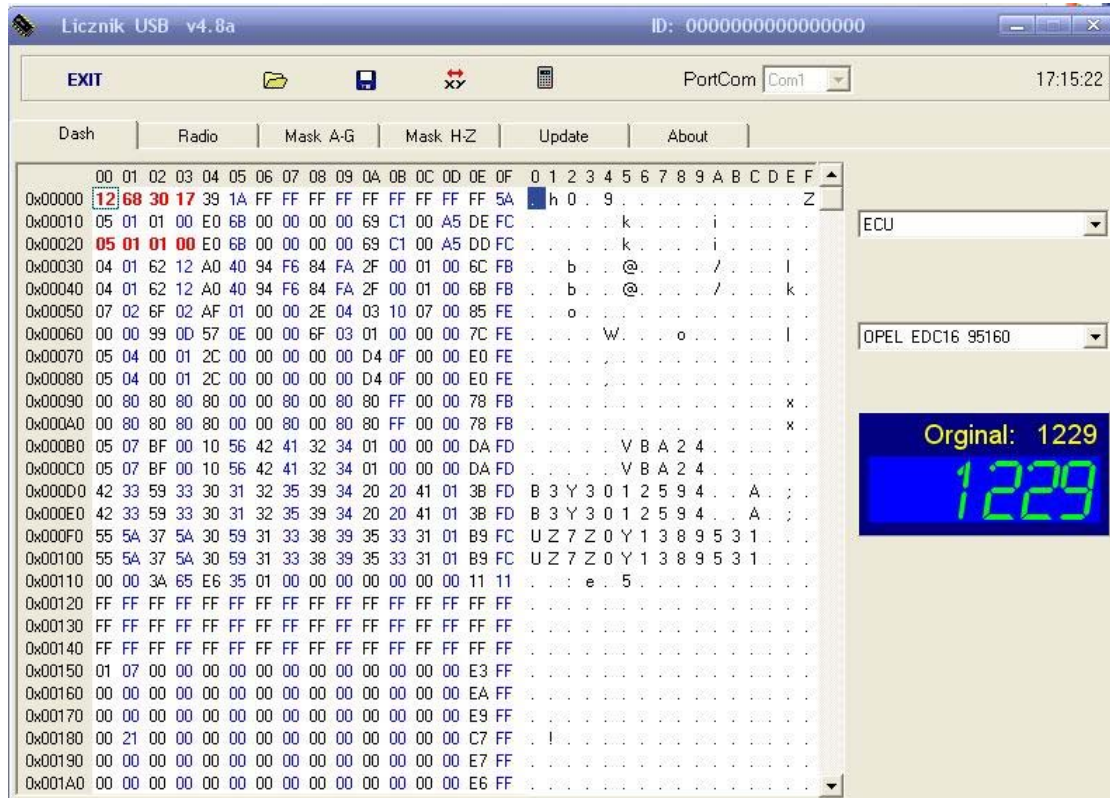
Hex	00	01	02	03	04	05	06	07	08	09	0A	0B	0C	0D	0E	0F	0	1	2	3	4	5	6	7	8	9	A	B	C	D	E	F
0x00000	00	5E	00	5E	00	5E	00	5E	00	5E	00	5E	00	5E	00	5E	.	.	.	.	.	.	.	.	.	.	.	.	.	.	.	
0x00010	00	5E	00	5E	00	5E	00	5E	00	5E	00	5E	00	5E	00	5E	.	.	.	.	.	.	.	.	.	.	.	.	.	.	.	
0x00020	05	01	01	00	E0	68	00	00	00	69	C1	00	A5	DD	FC	.	.	.	.	.	.	.	.	.	.	.	.	.	.	.		
0x00030	04	01	62	12	A0	40	94	F6	84	FA	2F	00	01	00	6C	FB	.	.	.	.	.	.	.	.	.	.	.	.	.	.		
0x00040	04	01	62	12	A0	40	94	F6	84	FA	2F	00	01	00	6B	FB	.	.	.	.	.	.	.	.	.	.	.	.	.	.		
0x00050	07	02	6F	02	AF	01	00	00	2E	04	03	10	07	00	85	FE	.	.	.	.	.	.	.	.	.	.	.	.	.	.		
0x00060	00	00	99	0D	57	0E	00	00	6F	03	01	00	00	00	7C	FE	.	.	.	.	.	.	.	.	.	.	.	.	.	.		
0x00070	05	04	00	01	2C	00	00	00	00	00	D4	0F	00	00	E0	FE	.	.	.	.	.	.	.	.	.	.	.	.	.	.		
0x00080	05	04	00	01	2C	00	00	00	00	00	D4	0F	00	00	E0	FE	.	.	.	.	.	.	.	.	.	.	.	.	.	.		
0x00090	00	80	80	80	80	00	00	80	00	80	80	80	FF	00	00	78	FB	.	.	.	.	.	.	.	.	.	.	.	.	.		
0x000A0	00	80	80	80	80	00	00	80	00	80	80	80	FF	00	00	78	FB	.	.	.	.	.	.	.	.	.	.	.	.	.		
0x000B0	05	07	BF	00	10	56	42	41	32	34	01	00	00	00	DA	FD	.	.	.	.	.	.	.	.	.	.	.	.	.	.		
0x000C0	05	07	BF	00	10	56	42	41	32	34	01	00	00	00	DA	FD	.	.	.	.	.	.	.	.	.	.	.	.	.	.		
0x000D0	42	33	59	33	30	31	32	35	39	34	20	20	41	01	3B	FD	.	.	.	.	.	.	.	.	.	.	.	.	.	.		
0x000E0	42	33	59	33	30	31	32	35	39	34	20	20	41	01	3B	FD	.	.	.	.	.	.	.	.	.	.	.	.	.	.		
0x000F0	55	5A	37	5A	30	59	31	33	38	39	35	33	31	01	B9	FC	.	.	.	.	.	.	.	.	.	.	.	.	.	.		
0x00100	55	5A	37	5A	30	59	31	33	38	39	35	33	31	01	B9	FC	.	.	.	.	.	.	.	.	.	.	.	.	.	.		
0x00110	00	00	3A	65	E6	35	01	00	00	00	00	00	00	00	11	11	.	.	.	.	.	.	.	.	.	.	.	.	.	.		
0x00120	FF	FF	FF	FF	FF	FF	FF	FF	FF	FF	FF	FF	FF	FF	FF	FF	.	.	.	.	.	.	.	.	.	.	.	.	.	.		
0x00130	FF	FF	FF	FF	FF	FF	FF	FF	FF	FF	FF	FF	FF	FF	FF	FF	.	.	.	.	.	.	.	.	.	.	.	.	.	.		
0x00140	FF	FF	FF	FF	FF	FF	FF	FF	FF	FF	FF	FF	FF	FF	FF	FF	.	.	.	.	.	.	.	.	.	.	.	.	.	.		
0x00150	01	07	00	00	00	00	00	00	00	00	00	00	00	00	E3	FF	.	.	.	.	.	.	.	.	.	.	.	.	.	.		
0x00160	00	00	00	00	00	00	00	00	00	00	00	00	00	00	EA	FF	.	.	.	.	.	.	.	.	.	.	.	.	.	.		
0x00170	00	00	00	00	00	00	00	00	00	00	00	00	00	00	E9	FF	.	.	.	.	.	.	.	.	.	.	.	.	.	.		
0x00180	00	21	00	00	00	00	00	00	00	00	00	00	00	00	C7	FF	.	.	.	.	.	.	.	.	.	.	.	.	.	.		
0x00190	00	00	00	00	00	00	00	00	00	00	00	00	00	00	E7	FF	.	.	.	.	.	.	.	.	.	.	.	.	.	.		
0x001A0	00	00	00	00	00	00	00	00	00	00	00	00	00	00	E6	FF	.	.	.	.	.	.	.	.	.	.	.	.	.	.		

BMW

M35080 v1

Original: 12512

1504



## VIA DASH CONNECTOR

206 Jaeger HC05H12

Citroen Berlingo HC908

Citroen Saxo / Peugeot 106

Renault Laguna2 HC908AZ60

Peugeot 406/607 VDO

Renault Jaeger HC908

Sprinter VDO 93s46

Vito CDI HC908

## ECU

Fiat v1 JTD 95P08

Fiat v2 JTD 95P08

VAG EDC15 24c04

VAG EDC16 95320

## **BIKES**

Kawasaki ZXR6 Ninja 93c46

Yamaha FZS600 Fazer 93c46

## ALFA ROMEO

- 146 HC05

- 147 93c86

- 147 ST6249

- 156 HC11KG4 Black

- 156 HC11KG4 White

- 164 HC05

- 166 93c56

- 166 HC711

## AUDI

- 100 93c46 VDO

- A3 03 93c86

- A3 03 93c86

- A3 93c86

- A3 HC912 01

- A3 HC912 03

- A3/A4/A6 93c66 VDO v1

- A3/A4/A6 93c66 VDO v2

- A4 24c08 BOSCH
- A4 24c08 BOSCH Crypto
- A4 93c46 VDO
- A4 93c56
- A4 93c56 UKNSI 95
- A4 93c56 UKNSI 97
- A4 93c56 UKNSI 98
- A4 93c56 z komp VDO
- A4 HC912
- A6 93c46 VDO
- A6 93c56 UKNSI 97
- A6 93c86 VDO
- A8 03 93c86
- A8 93c56 VDO 95
- A8 93c86 VDO 01
- Audi 93c86 VDO Crypto (only show place of km)
- TT HC912

## BMW

- BMW 3 2 Memory (1) 93c46
  - BMW 3 2 Memory (2) 93c46
  - BMW 3 E36 91-98
  - BMW 5 Blue
  - BMW 5 Green IIC
  - BMW E38/E39 High <=SW12 93c56
  - BMW E38/E39 High SW11 93c56
  - BMW E38/E39 High SW12,13 93c66
  - BMW E38/E39 High SW13 93c56
-

- BMW E38/E39 High SW14 93c56
- BMW E38/E39 High SW15 93c56
- BMW E38/E39 High SW5,7 93c56
- BMW E38/E39 Low <=SW10,12 93c56
- BMW E38/E39 Low SW11 93c56
- BMW E38/E39 Low SW15 93c56
- BMW E38/E39 Low SW16 93c66
- BMW E46 93c66

#### CHRYSLER

- PT Crusier HC912
- Voyager BCM 04 HC912
- Voyager BCM 99 HC11K4
- Voyager BCM 96 HC11E9

#### CITROEN

- Berlingo v1 Dash + BSI ( HC908 + uPD780949 )
- Berlingo v2 Dash + BSI ( 95020 + 95160 )
- C2 Dash + BSI ( 93c46 + 95160 )
- C3 Dash + BSI ( 93c46 + 95160 )
- C4 Dash + BSI 93c46 + 95128
- C5 Dash + BSI ( 68HC08 + 68HC912 )
- C5 Dash + BSI (HC08 + 95128)
- C5 Dash + BSI (HC08 + 95160)
- C8 Dash1 + Dash2 (autodetect) + BSI ( 95020 +95020 + HC912 )
- Evasion HC05H12
- Jumper 95040

- Jumpy 04 HC05H12
- Jumpy HC08
- Xara 01 Dash + BSI
- Xara 03 Dash + BSI ( 93c66 + 95160 )
- Xara 93c46
- Xara Picasso v1 Dash + BSI ( 93c66 + 95160 )
- Xara Picasso v2 Dash + BSI ( 93c66 + uPD780949 )
- Xsantia 93c46

#### DACIA

- Logan Sagem 93c56

#### DAEWOO

- Kalos HC05H12
- Matiz HC05H12

#### FIAT

- Brava 93c56 YazMeter
- Brava HC(7)05
- Brava HC05E6
- Brava HC08
- Brava HC11KG4
- Brava ST6249
- Doblo 04 95040
- Doblo 95040
- Doblo HC08AZ32

- Ducato 25040
- Marea HC08
- Multipla 93c56 v1
- Multipla 93c56 v2
- Palio 95040
- Panda 95040
- Punto2 25020
- Punto2 25040
- Punto2 HC08 bez obr.
- Punto2 HC08 z obr.
- Punto3 95040
- Scudo 95040
- Scudo HC05H12
- Scudo HC08
- Seicento 25020
- Seicento 25040
- Stilo HC912D60
- Tempra 93c06
- Tempra 93c46 v1
- Tempra 93c46 v2
- Tempra Borg 93c46
- Tipo Borg 93c46
- Tipo Veglia 93c46
- Ulyss Dash1 + Dash2 (autodetect) + BSI ( 95020 +95020 + HC912 )

## FORD

- Connect 86HC912D60
- Cougar HC11KA4

- Ecoline 9S12DT256C
- Escape 9S12H128
- Escort HC11
- Expedition 68HC912D60
- Explorer 68HC912D60
- Explorer 68HC912DG128
- Explorer 9S12DP256
- Fiesta 24c08
- Fiesta HC11
- Fiesta NEC uPD780973
- Focus 06 24c16
- Focus 24c16
- Focus 9S12H128
- Focus C-Max 3M5T 9S12H256
- Focus C-Max 4M5T 9S12H256
- Focus HC11
- Fusion 06 93c66
- Fusion 24c08
- Galaxy HC11
- Galaxy VDO v1 93c86
- Galaxy VDO v2 93c86
- Mondeo 68HC912D60
- Puma HC11
- Scorpio HC11
- Transit 24c16
- Transit 06 93c76
- Transit Kiencle 93c66
- Transit Kiencle 93c66 CRC
- WinStar HC11



## HONDA

- Accord 93c56
- Civic 01 93c56
- CRV 93lc56
- HRV 93c46
- Jazz 93c56
- Legend 93c46
- Shuttle 93c46

## HYUNDAI

- Hyundai NEC  $\mu$ PD780828
- Matrix 93c46
- Santa Fe 93c46
- XG-300 93c46

## IVECO

- Iveco 93s56

## KIA

- Carnival 93c46
- Clarus 93c46
- Rio 93c46
- Sorento 93c46
- Sportage 93c46

## LANCIA

- K Veglia Borletti HC11KG4
- K Veglia Borletti TMS370
- Libra Jaeger HC11KG4
- Phedra Dash1 + Dash2 + BSI

## MAZDA

- 121 Visteon HC11E20
- 323/626 v1 93c46
- 323/626 v1 93c56
- 323/626 v2 93c46
- 323/626 v2 93c56
- 626 01 93c56
- Mazda 3 05 93c56
- Mazda 6 05 93c56
- MPV 93c46
- Premacy 93c56

## MITSUBISHI

- Carisma 93c46
- Colt 93c46
- Galant 93c46
- Lancer 98 93c46
- Outlander 03 93cs56
- Pajero 93c46

- Pajero 93c56
- Shogun 93c46
- Space Wagon 93c46
- SpaceStar 93c46

## MERCEDES

- A Class 00 HC912
- A Class 01 Dash+BCU
- A Class 98 HC11KG4
- Actros Kienzle 24c04
- C Class 93c56
- C Class 95 93c56
- C class Motometer 93c56
- E Class 00 93c86
- E Class 93c56
- SLK/CLK 93c56
- Smart VDO 93c66
- Sprinter 24c02
- Sprinter 93s46
- Sprinter Kienzle 24c02
- Sprinter Kienzle 24c04
- VDO 93c56/93c66
- Vito 04 Dash+EZS
- Vito HC908AZ60
- WZ211 Dash+EZS

## NISSAN

- Almera 01 93c66
- Almera 93c56
- Almera Tino 03 93c66
- Maxima 00-02 93c56
- Micra 93c46
- Micra 93c66
- Nurano 04 93c66
- Navara 06 9c12h128
- Primera 93c46
- Primera 93c66

#### OPEL

- Astra H M35080
- Astra TRW 24c02
- Astra VDO 93c46
- Astra VDO 93c56
- Frontera DELCO 93c46
- Monterey 99 93c46
- Movano 04 93c66
- Omega 93c46
- Opel NEC  $\mu$ PD780828
- Senator 93c46
- Signum 93c66
- Vectra B 93c46
- Vectra C 93c66
- Vivaro 05 93c66
- Zafira TRW 24c02
- Zafira VDO 93c56

## PEUGEOT

- 206 Jaeger 02 Dash+BSI
- 206 Jaeger HC05H12
- 207 Dash + BSI 93c66 + 95128
- 306 Sagem v1 93c56
- 306 Sagem v2 93c56
- 307 Dash+BSI (NEC+95160)
- 406 Jaeger HC05
- 406 Sagem 93c46
- 406 v1 Dash + BSI ( 93c66 + 93c66 )
- 407 Dash+BSI 93c66+95128
- 407 Dash+BSI 93c66+95256
- 607 Dash+BSI 93c66+95128
- 607 Dash+BSI 93cl66+93c66
- 806 Jaeger HC05H12
- 807 Dash1 + Dash2 (autodetect) + BSI ( 95020 +95020 + HC912 )
- Expert Jaeger HC08
- Partner 02 Dash + BSI
- Partner 03 Dash + BSI
- Partner Jaeger HC08

## RENAULT

- Clio 04 93c56
- Clio III Sagem 25020
- Clio III Visteon 24c04
- Clio Sagem 93c46

- Espace 2002
- Espace 2003 93c56
- Espace Jaeger TMS370
- Kangoo Sagem 93c46
- Laguna Jaeger HC08
- Laguna Jaeger HC12
- Laguna Jaeger ST6249
- Laguna Jaeger TMS370
- Laguna Sagem v1 93c46
- Master 01 95020
- Master 04 93c66
- Master Tacho 93c66
- Megane Jaeger HC11KG4
- Megane Sagem 93c46
- Megane Visteon 24c04
- Megane Visteon 93c56
- Renault HC908 autodetect
- Renault v1 NEC  $\mu$ PD780973
- Renault v2 NEC  $\mu$ PD780973
- Safrane v1 93c46
- Safrane v2 93c46
- Safrane v3 93c56
- Scenic 04 93c56
- Trafic 01 95020
- Trafic 05 93c66
- Twingo 95 ST6245
- Twingo 98 ST6245

ROVER

---

- Freelander 93c46
- Freelander HC912D60
- Rover 25\45 93c46
- Rover 75 93c56

## SEAT

- Alhambra HC11
- Aroza 24c02
- Cordoba 00 93c66
- Cordoba 93c46
- Ibiza VDO
- Ibiza VDO 03 93c86
- Ibiza VDO 93c66
- Inka 93c66
- Leon 93c66
- Leon v1 93c86
- Leon v2 93c86
- Leon v3 93c86
- Toledo VDO 01 93c86
- Toledo VDO 24c16

## SKODA

- Fabia 93c86 crypto
- Fabia VDO 03 93c86
- Fabia VDO 93c86
- Felicia 93c66

- Octavia 00 93c86
- Octavia 01 93c86
- Octavia 02 93c86
- Octavia 03 93c86
- Octavia v1 93c66
- Octavia v2 93c66
- Octavia2 24c16
- Octavia2 24c32

#### SUZUKI

- Liana 04 93c56
- Swift VDO 05 93c66

#### TOYOTA

- Allion 93c46
- Alteza 93c46
- Ardeo Denso 93c46
- Aristo Denso 93c46
- Avalon Denso 98 93c46
- Avalon VDO 93c56
- Avensis Denso 93c46
- Avensis VDO 93c56
- Avensis Yazaki 93c46
- Caldina Yazaki 93c46
- Camry 96-03 93c46
- Camry Denso 05 93c56
- Camry Yazaki 93c46



- Carina Yazaki 93c46
- Celica Denso 00-02 93c46
- Chaser Denso 93c46
- Corolla Denso 93c46
- Corolla Sagem 93c46
- Corolla VDO 93c56
- Corolla VDO 93s56
- Corona Yazaki 93c46
- Cressida 97-99 93c46
- Crown Denso 93c46
- Duet Denso 93c46
- Echo Denso 93c46
- Estima 96 93c46
- Fielder Denso 93c46
- Forerunner v1 93c66
- Forerunner v2 93c66
- Forerunner Yazaki 93c56
- Fucargo 99-01 93c46
- Harrier Denso 93c46
- HDJ100 Yazaki 93c56
- Hiace Yazaki 93c46
- HighLander 01 93c46
- Ipsum 96 93c46
- Kluger Denso 93c56
- LandCruiser 100 93c56
- LandCruiser 90 93c56
- Prada/Prado 93c56
- Prada/Prado 93c66
- RAV 4 96-01 93c46

- Yaris 93c46

## VOLVO

- 850 93c56

- 850 v1 93c46

- 850 v2 93c46

- S40 93c56

- S60 01 HC12

- S70 00 HC12

- S70 00 HC908

- S70 01 HC12

- S70 97 93c56

- S80 00 HC908

- S80 01 HC12

- V40 93c56 UKNSI

## VW

- Bora VDO 93c86

- Caddy VDO 24c16

- Caddy VDO 24c32

- Corrado Motometer 93c56

- Corrado VDO 93c56

- Fox 9s12h256

- Golf 3 Diesel 93c46

- Golf 3 Motometer v1 93c56

- Golf 3 Motometer v2 93c56

- Golf 3 TRW 93c46

- Golf 3 VDO 93c46 v1
- Golf 3 VDO 93c46 v2
- Golf 4 Motometer 24c02
- Golf 4 VDO 00 93c86
- Golf 4 VDO 01 93c86
- Golf 4 VDO 93c46
- Golf 4 VDO 93c66
- Golf 5 24c16
- Golf 5 24c32
- LT35 24c02 tachometer
- LT35 93s46
- Lupo 24c02
- Motometer 24c02 #10
- Motometer 24c02 #20
- Motometer 24c02 #30
- Motometer 24c02 #40
- Motometer 24c02 #50
- Motometer 24c02 #60
- Passat 95 93c56
- Passat B5 VDO v1 93c66
- Passat B5 VDO v2 93c66
- Passat B6 VDO v1 93c86
- Passat B6 VDO v2 93c86
- Passat B6 VDO v3 93c86
- Passat B7 VDO 24c32
- Passat GT 93c46
- Passat GT 93c56
- Passat Jaeger v1 68HC711KG2
- Passat Jaeger v2 68HC711KG2

- Passat Motometer 24c08
- Passat Motometer 93c56
- Passat Motometer 96 93c56
- Passat VD202 93c46
- Passat VDO 91 93c56
- Polo 93c86 crypto
- Polo Motometer 02 24c02
- Polo Motometer 24c02
- Polo Motometer 93c46
- Polo TRW 24c08
- Polo TRW 24lc04
- Polo VDO 01 93c86
- Polo VDO 02 93c86
- Polo VDO 96-98 93c46
- Sharan 68HC11E9
- Sharan VDO v1 93c86
- Sharan VDO v2 93c86
- Sharan VDO v3 93c86
- T4 Motometer 93c56
- T4 VDO 93c66
- T5 VDO v1 93c86
- T5 VDO v2 93c86
- T5 VDO v3 93c86
- Touareg 04 24c08
- Touareg 24c08
- Touareg 93c46
- Touran VDO 24c32
- Touran VDO v1 24c16
- Touran VDO v2 24c16

- Vento TRW 93c46
- Vento VDO 93c46

**Last update:**

- PEUGEOT 206 Jaeger HC05H12 - Dashboard program
- ECU OPEL EDC16 95640
- PEUGEOT 307 BSI v1 HC912DG128
- PEUGEOT 307 BSI v2 HC912DG128
- PEUGEOT 307 BSI v3 HC912DG128
- OPEL Corsa D M35080
- NISSAN Terrano HC908AZ32
- MERCEDES W203 Dash + EZS ( 93c86 + HC9S12DT128 )
- MERCEDES W211 EZS v2 HC912DC128
- FORD Connect v2 HC912D60
- FORD Focus 07 HC9S12H256
- RENAULT Kangoo 06 93c66
- SUZUKI Liana 07 93c56
- HYUNDI Trajet 93s56
- CITROEN C8 BSI v2 HC912DG128
- BMW 3 sw23 2mem. (1) 93c46
- BMW 3 sw23 2mem. (2) 93c46
- BMW EWS v1 HC11EA9
- BMW EWS v2 HC11EA9
- BMW Brown 5/7 93c46
- ECU FIAT EDC15 Euro3 95P08 v1
- ECU FIAT EDC15 Euro3 95P08 v2
- ECU FIAT EDC15 Euro3 95P08 v3
- ECU FIAT EDC15 Euro3 95P08 v4
- ECU FIAT EDC15 Euro3 95P08 v5

- ECU FIAT EDC15 Euro3 95P08 v6
  - ECU FIAT EDC15 Euro3 95P08 v7
  - ECU FIAT EDC15 Euro3 95P08 v8
  - ECU OPEL EDC16 95160
  - FIAT 95080 crypto
  - Audi MM HC912 auto CRC ( A6 , TT )
  - Sprinter, Vito, LT 93s46 - Dashboard programm
  - NISSAN Almera 93c46
  - PEUGEOT 206 BSI - automatic version detect
  - RENAULT Laguna 05 HC9S12DG128
  - TOYOTA Yaris 02 93c46
  - TOYOTA Yaris 06 93c56
  - VOLVO V50 04 HC9S12GD128
  - VW Caddy 93c46
-